

CERTIFIED LAND CORNER RECORDATION

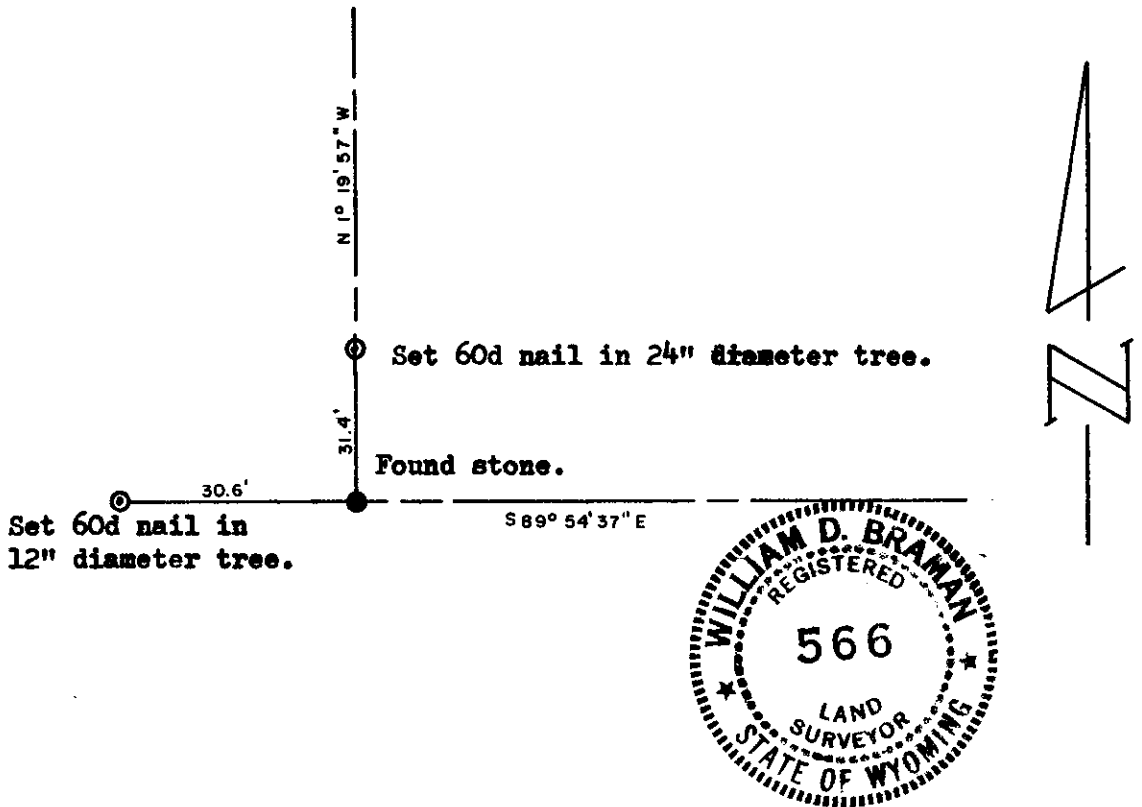
DESCRIPTION OF CORNER EVIDENCE FOUND, AND ORIGINAL RECORD (If known)

South corner of sections 31/32, T.13 N., R.70 W., 6th P.M., Laramie County, Wyoming
 Granitesstone, 20"x16"x6", with 1 chiseled mark on east, 5 chiseled marks on west. Chisel marks are on wrong side, but I believe that the stone is undisturbed. It is tightly wedged among other rocks.

DESCRIPTION OF MONUMENT AND ACCESSORIES ESTABLISHED TO PERPETUATE THE ORIGINAL LOCATION OF THIS CORNER:

Chiseled 'X' on top of stone.
 References: set 60d nails in trees (See sketch)

SKETCH, WITH COURSE AND DISTANCE TO ADJACENT CORNER IF DETERMINED IN THIS SURVEY.
 (May Sketch or Paste Reproduction on Reverse Side.)



I, William D. Braman certify that I have carefully performed or reviewed the work done on the diagrammed corner as reported on this recordation form and approve the same.

William D. Braman
 Signature of Surveyor

LS 566
 Registration No.

STATE OF WYOMING,
 Office of Clerk and Recorder,
 County of Laramie

This "corner record" was filed for record on the 18 day of Feb., 1927, was noted on the cross-index plat and is assigned page No. _____, in book No. _____.

Gene C. Whithead
 County Official

Cross Index No. <u>2-5</u>	T. <u>13</u>	R. <u>70</u>	Mer.
_____	T. _____	R. _____	Mer.
_____	T. _____	R. _____	Mer.
_____	T. _____	R. _____	Mer.
_____	T. _____	R. _____	Mer.
_____	T. _____	R. _____	Mer.
_____	T. _____	R. _____	Mer.

428096

Photographed _____
Indexed _____
Posted _____
Assessor _____